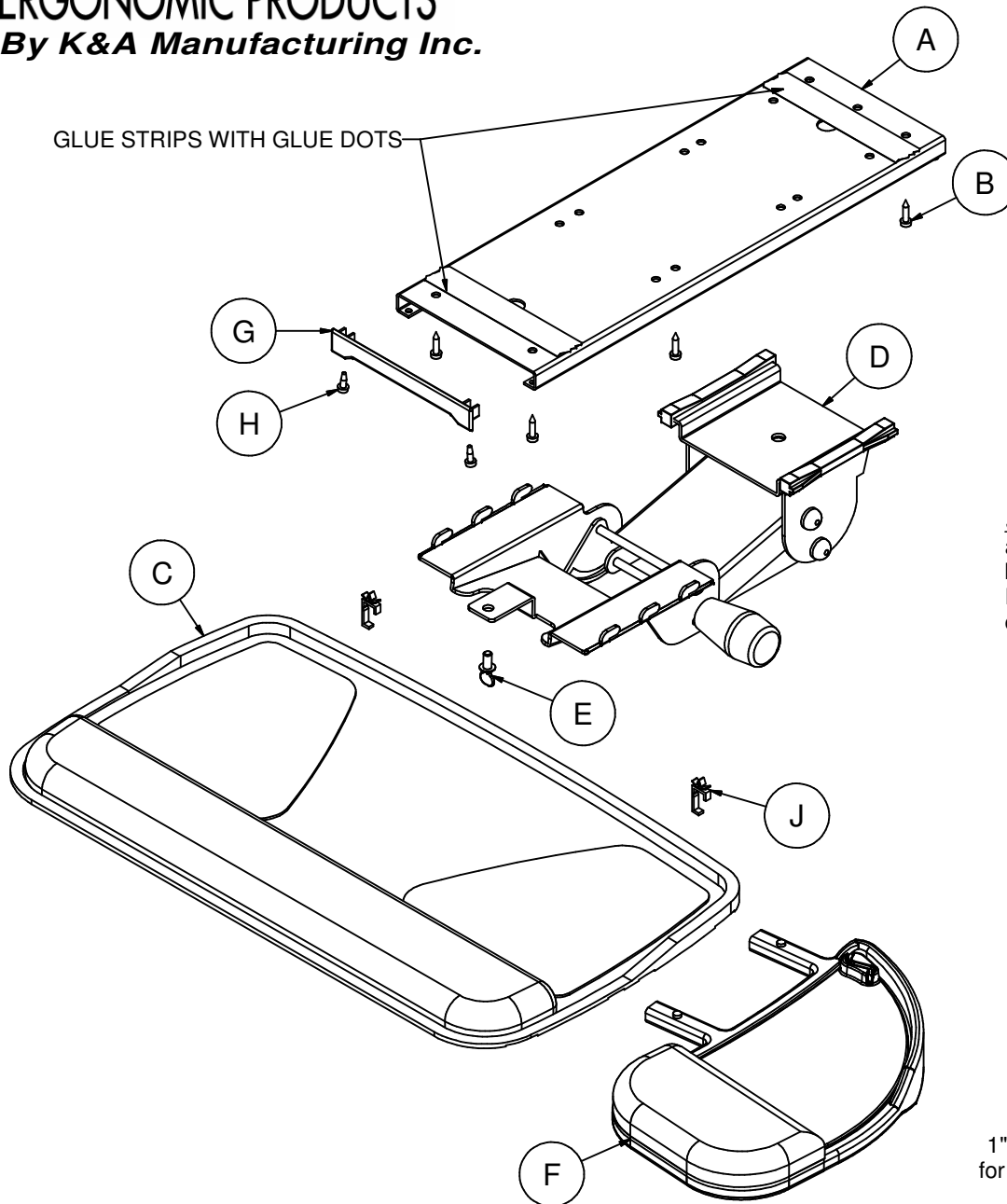
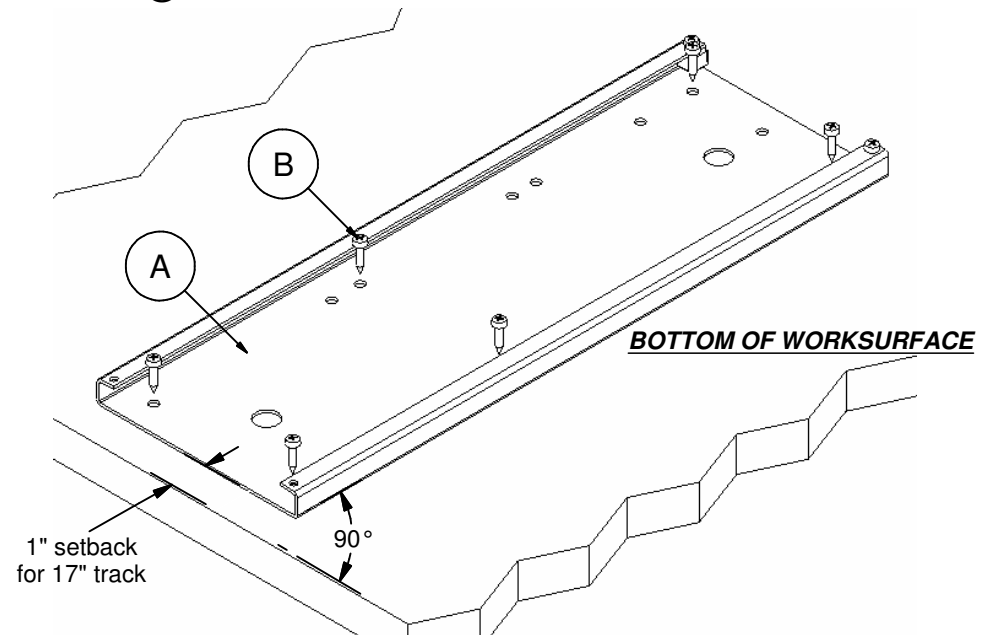


TOOLS REQUIRED FOR ASSEMBLY:
Cordless Drill W/ #2 Square-Recess Bit

Parts List			
ITEM	QTY	PART NUMBER	DESCRIPTION
A	1	081320041	17" Track
B	6	50323	#10x3/4" Combo Drive Wood Screw
C	1	N/A	Keyboard Tray
D	1	N/A	Arm Mechanism (100VS)
E	1	080420042	1/4-20 X 3/8" Regular Thumb Screw (Black/OX)
F	1	N/A	Mouse Tray
G	1	50232	Track Stop (Plastic)
H	2	50200	10-24 X 1/2" Pan Ph(Black/OX)
J	2	080520042	Cord Saddle Clip
K	2	080520043	Cord "D" Clip (not shown)



STEP 1: Mount (A) Track to bottom of worksurface as follows:
 a) Remove glue strips from track so glue dots are exposed.
 b) Position Track to be square and 1" back from the front edge of the worksurface. Press track firmly into position so glue dots support the Track under the worksurface.
 c) Install (B) fasteners (six per track). Be sure not to over tighten screws.



For questions or concerns, please call K & A Manufacturing, Inc. 1-800-298-4351 available Monday-Friday 8:00 AM to 5:00 PM (Central Time)