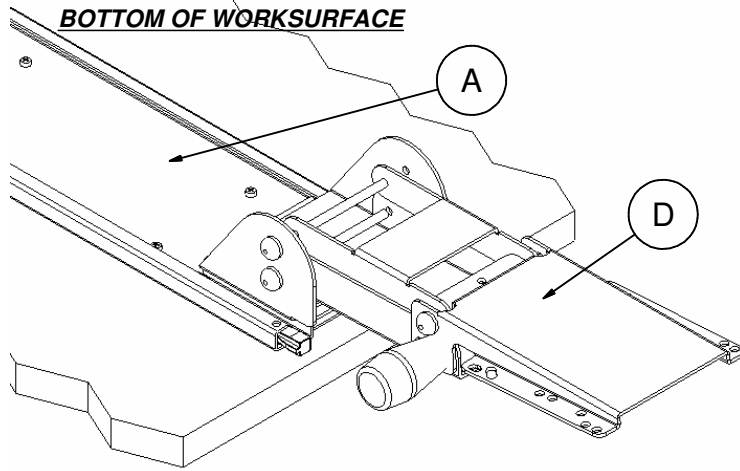
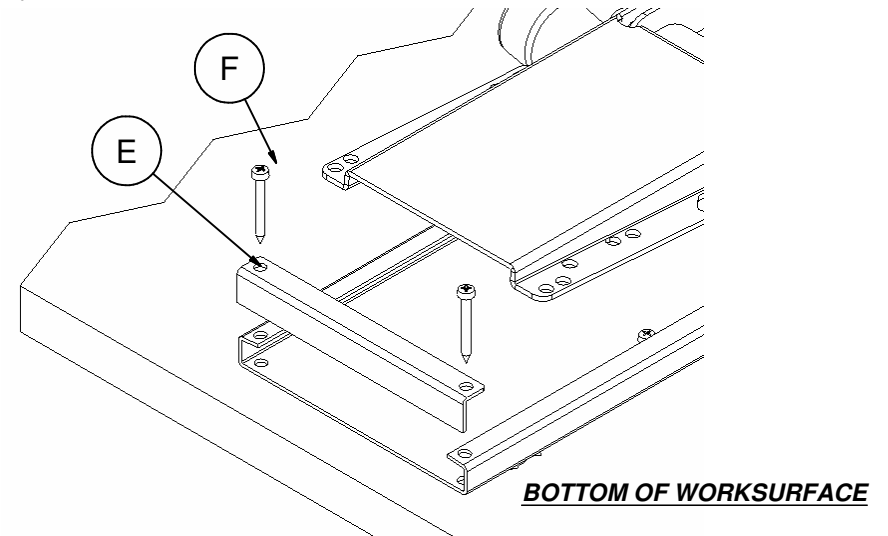


100F/S,FX/S,FHL/S AND 200FSS/S ARTICULATING KEYBOARD INSTALLATION INSTRUCTIONS

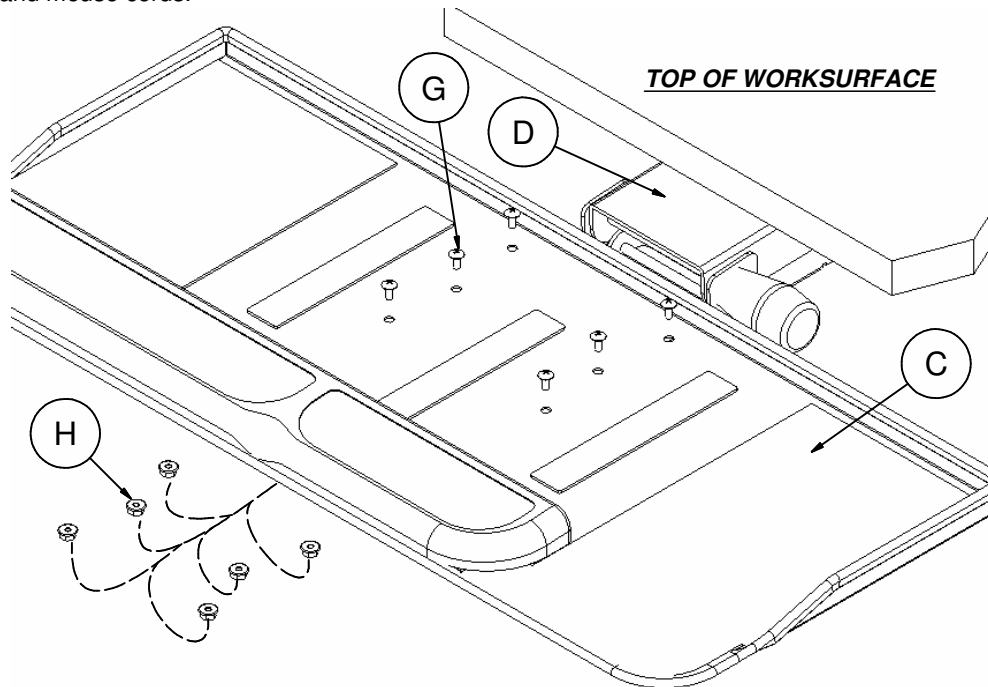
STEP 2: Slide (D) Arm Mechanism into the grooves of the (A) Track.



STEP 3: Fasten the (E) Track Stop into place with two (F) Fasteners going through the Track Stop, Track, and into the bottom of the work surface.

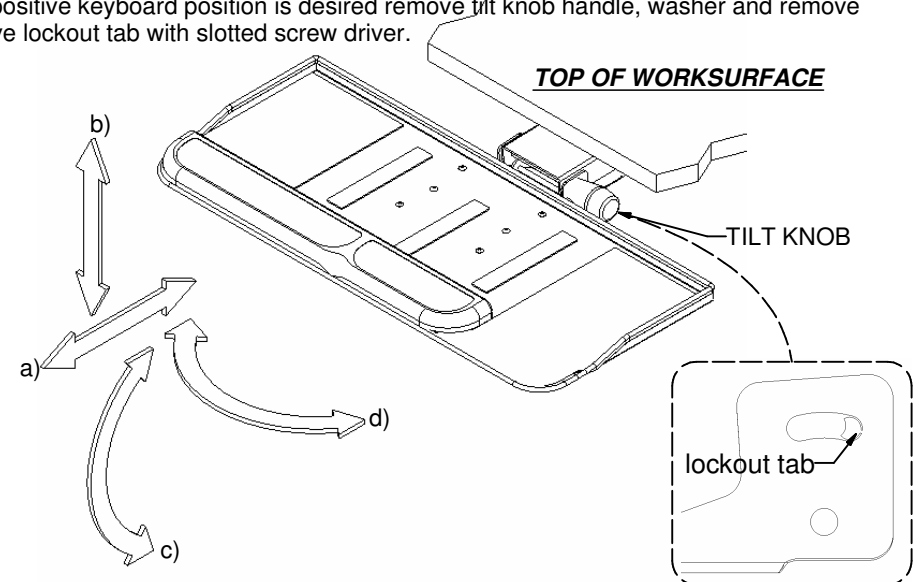


STEP 4: Place (C) Keyboard Tray onto (D) Arm Mechanism and align with holes on arm mechanism then fasten with (G) fasteners and (H) nut then tighten with wrench and #2 phillips head bit. Install (J) Cord "D" Clips (not shown) are used for cord management for the keyboard and mouse cords.



STEP 5: Installation is finished. To operate the system:

- Push in/pull out the Keyboard Tray.
- For height adjustment lift and tilt back of Keyboard Tray down or pull up to adjust the height; release to lock in place.
- For tilt adjustment loosen the tilt knob/lever on the right side of the Arm Mechanism, position the Keyboard Tray to a neutral or negative position, and retighten the knob/lever.
- The Arm Mechanism will also swivel to the left or right with a moderate push to the side.
- If positive keyboard position is desired remove tilt knob handle, washer and remove positive lockout tab with slotted screw driver.



For questions or concerns, please call K & A Manufacturing, Inc. 1-800-298-4351 available Monday-Friday 8:00 AM to 5:00 PM (Central Time)

www.rightangleproducts.com

04/20/2004